

CAJO

CAJO HERCULES MULTIMARK™ THE AGILE GIANT ENABLES DIVERSE MARKINGS

CAJO HERCULES MULTIMARK™

Cajo Hercules Multimark™ is a turnkey, servo-driven solution for the high-class marking of semi-finished and finished products with diverse marking content. The marking head moves in X, Y, and Z axes so the system enables marking multiple parts of one large item or several smaller items in one run.

Thanks to the intelligent **CajoSuite™** software's unique tiling feature, Cajo Hercules Multimark™ is able to split large designs into multiple smaller marking areas. The maximum marking area is defined by the optics. The marking area can be split when the marking design is larger than the marking area of the optics and otherwise could not be completed in one run. Cajo Hercules Multimark™ can be integrated smoothly into the production line or used as a separate workstation. The machine is capable of permanently marking **stainless steel, aluminum, and other metals and plastics.**

The external control stand with easy-to-use marking software **CajoSuite™** makes designing and customizing marking content simple and flexible. The software makes it possible to add variable marking information, such as **logos, serial numbers, barcodes, QR and data matrix codes, and other product information.** The system is one of the longest-lasting marking machines on the market.

Choose Cajo for agile product marking.



HIGH-QUALITY, PRECISE AND
PERMANENT MARKINGS



SEAMLESS INTEGRATION
FOR INDUSTRY 4.0



LOW RUNNING COST,
SHORT PAYBACK TIME



SEMI-AUTOMATED PROCESS



FAST AND EASY TO OPERATE



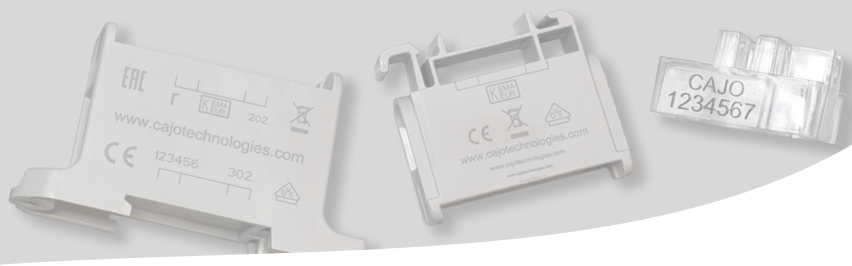
SUPPORTS VERIFIED
CAJO MATERIAL LIBRARY

CONTACT INFORMATION

Rasivainiontie 8
FI-90440
Kempele, FINLAND
+358 10 583 5020
info@cajotechnologies.com

CAJOTECHNOLOGIES.COM





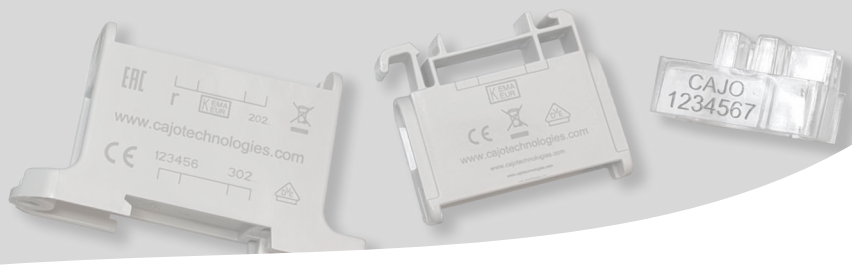
TECHNICAL DATA (METRIC SYSTEM)

Laser class	Class 1
Max size for the markable part (H x W x L)	
Tailor Fiber with 175 x 175 mm marking field	250 x 760 x 900 mm
Tailor Fiber with 220 x 220 mm marking field	200 x 760 x 900 mm
Tailor Advanced with 175 x 175 mm marking field	250 x 760 x 900 mm
Tailor Advanced with 220 x 220 mm marking field	200 x 760 x 900 mm
Tailor Green with 150 x 150 mm marking field	250 x 760 x 900 mm
Tailor CO2 with 175 x 175 marking field	250 x 760 x 900 mm
Total marking field	
Tailor Fiber with 175 x 175 mm marking field	525 x 725 mm
Tailor Fiber with 220 x 220 mm marking field	570 x 770 mm
Tailor Advanced with 175 x 175 mm marking field	525 x 725 mm
Tailor Advanced with 220 x 220 mm marking field	570 x 770 mm
Tailor Green with 150 x 150 mm marking field	500 x 700 mm
Tailor CO2 with 175 x 175 marking field	525 x 725 mm
Power supply	240 V / 50 Hz or 110 V / 60 Hz (depending on device version)
Power consumption	600 W + Tailor unit
Marking head position adjustment	Software-controlled (CajoSuite™)
Dimensions (H x W x L)	1850 x 925 x 1350 mm
Weight (without Tailor)	300 kg
Ambient conditions	15-35 °C, humidity ≤80 %
Fume extractor outlet	50 mm
Positioning precision	< 0.1 mm
Connectivity	2 x LAN 1 x RS-422 (incremental encoder input) 1 x Fume extractor control (24 VDC) 1 x Start marking trigger
Computer	Windows 7 / Windows 10 / Windows 11
Marking software	CajoSuite™
Remote diagnostics	Via built-in hardware VPN (requires Internet connection)
External Control Stand	
Dimensions (H x W x L)	1475 x 615 x 580 mm
Display	24" LCD
Weight	60 kg
Suitable Tailor units	
	Tailor Fiber
	Tailor Advanced
	Tailor Green
	Tailor CO2

TRADEMARK

All trademarks are the property of Cajo Technologies Ltd. All rights reserved. Information contained herein is subject to change without notice. No part of this Data Sheet may be reproduced in any form or by any means, electronic, mechanical, photocopying, recording, or otherwise, without the prior written permission of Cajo Technologies Ltd. Cajo Technologies Ltd. retains ownership and all other rights of all drawings, models, shapes, solutions, ideas, or any kind of industrial property rights presented or expressed in this Data Sheet. All other use of the material presented or expressed in this Data Sheet except for getting acquainted with, quoting, ordering, or using in business otherwise involving Cajo Technologies Ltd. is strictly prohibited.





TECHNICAL DATA (IMPERIAL SYSTEM)

Laser class	Class 1
Max size for the markable part (H x W x L)	
Tailor Fiber with 6.9 x 6.9 in marking field	9.8 x 29.9 x 35.4 in
Tailor Fiber with 8.7 x 8.7 in marking field	7.9 x 29.9 x 35.4 in
Tailor Advanced with 6.9 x 6.9 in marking field	9.8 x 29.9 x 35.4 in
Tailor Advanced with 8.7 x 8.7 in marking field	7.9 x 29.9 x 35.4 in
Tailor Green with 5.9 x 5.9 in marking field	9.8 x 29.9 x 35.4 in
Tailor CO2 with 6.9 x 6.9 in marking field	9.8 x 29.9 x 35.4 in
Total marking field	
Tailor Fiber with 6.9 x 6.9 in marking field	20.7 x 28.5 in
Tailor Fiber with 8.7 x 8.7 in marking field	22.4 x 30.3 in
Tailor Advanced with 6.9 x 6.9 in marking field	20.7 x 28.5 in
Tailor Advanced with 8.7 x 8.7 in marking field	22.4 x 30.3 in
Tailor Green with 5.9 x 5.9 in marking field	19.7 x 27.6 in
Tailor CO2 with 6.9 x 6.9 in marking field	20.7 x 28.5 in
Power supply	240 V / 50 Hz or 110 V / 60 Hz (depending on device version)
Power consumption	600 W + Tailor unit
Marking head position adjustment	Software-controlled (CajoSuite™)
Dimensions (H x W x L)	72.8 x 36.4 x 53.1 in
Weight (without Tailor)	661 lb
Ambient conditions	59-95 °F, humidity ≤80 %
Fume extractor outlet	2.0 in
Positioning precision	< 0.004 in
Connectivity	2 x LAN 1 x RS-422 (incremental encoder input) 1 x Fume extractor control (24 VDC) 1 x Start marking trigger
Computer	Windows 7 / Windows 10 / Windows 11
Marking software	CajoSuite™
Remote diagnostics	Via built-in hardware VPN (requires Internet connection)
External Control Stand	
Dimensions (H x W x L)	58.1 x 24.2 x 22.8 in
Display	24" LCD
Weight	132 lb
Suitable Tailor units	
	Tailor Fiber
	Tailor Advanced
	Tailor Green
	Tailor CO2

TRADEMARK

All trademarks are the property of Cajo Technologies Ltd. All rights reserved. Information contained herein is subject to change without notice. No part of this Data Sheet may be reproduced in any form or by any means, electronic, mechanical, photocopying, recording, or otherwise, without the prior written permission of Cajo Technologies Ltd. Cajo Technologies Ltd. retains ownership and all other rights of all drawings, models, shapes, solutions, ideas, or any kind of industrial property rights presented or expressed in this Data Sheet. All other use of the material presented or expressed in this Data Sheet except for getting acquainted with, quoting, ordering, or using in business otherwise involving Cajo Technologies Ltd. is strictly prohibited.

CAJOTECHNOLOGIES.COM

